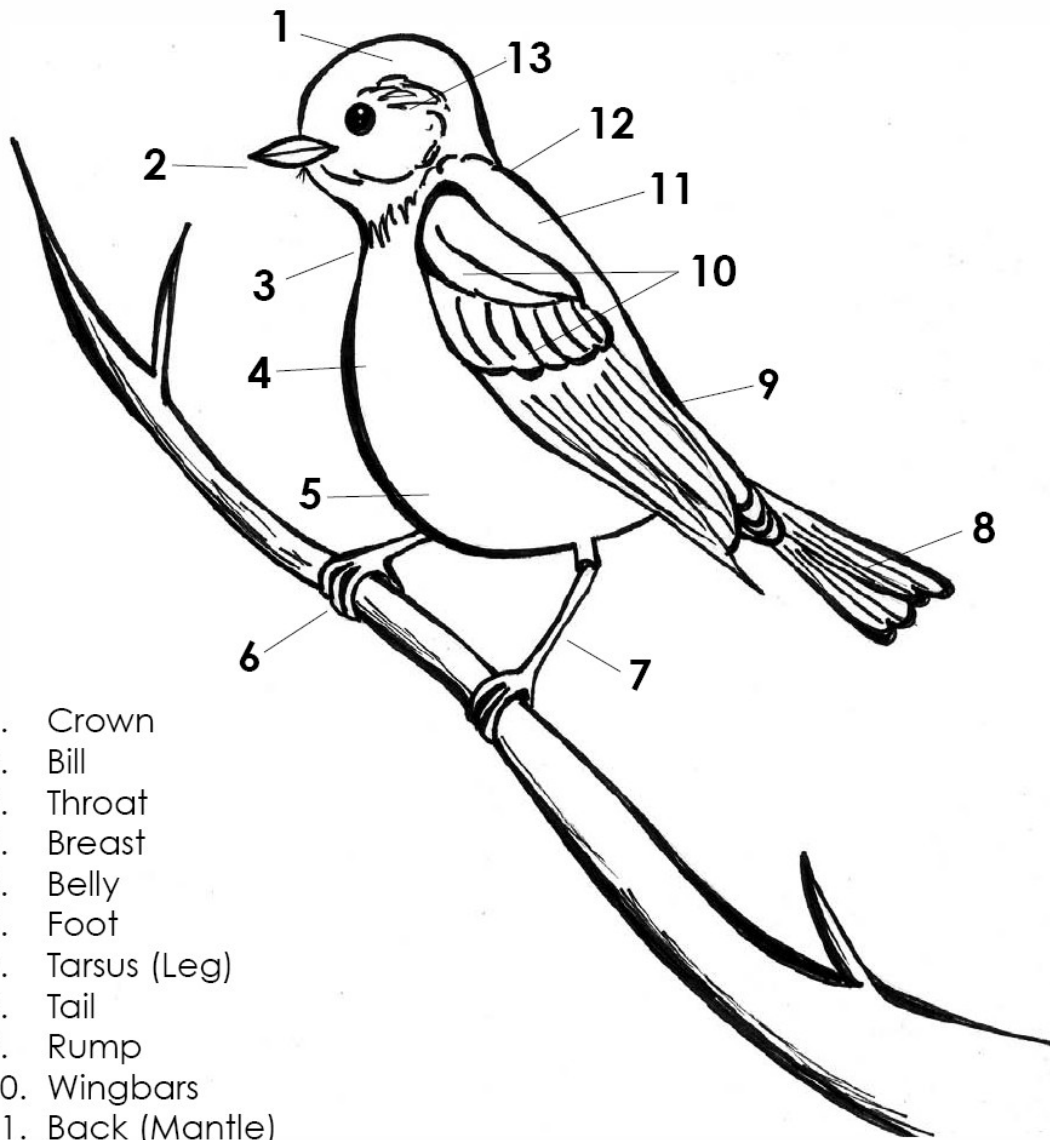


# BIRDS



1. Crown
2. Bill
3. Throat
4. Breast
5. Belly
6. Foot
7. Tarsus (Leg)
8. Tail
9. Rump
10. Wingbars
11. Back (Mantle)
12. Nape
13. Eyebrow

# TABLE OF CONTENTS

Classification	3
Anatomy (see also cover sheet)	11
Eggs	12
Mating	19
Nesting	21
Beaks	25
Feet	36
Feathers and Wings	41
Communication	47
Migration	51
Birding As A Hobby	53
Write A Bird Cinquain	56
How to Draw A Bird	57
Bird Report Form	58
Extreme Birds	59
Fun Stuff	63
Bird Jokes	71
Bird Links	75
Answer Key	76

# CLASSIFICATION

(not all birds can fly!\*)

**ALL BIRDS...**



have feathers



lay hard-shelled eggs



have beaks & 2 legs



have hollow bones



are warm-blooded;  
their body temperature  
stays the same in warm  
or cold weather

*\*Not all flying animals are birds; and not all birds can fly.*

# Bird Classification

Birds have three characteristics which distinguish them from other animals: feathers, hard-shelled eggs and hollow bones. *Send a blank email to [TheTeachersDesk@verizon.net](mailto:TheTeachersDesk@verizon.net) with 'Bird Classification Chart' in the subject line for a free bird classification chart.*

## FEATHERS

Birds use their feathers in many ways; flight, regulation of body temperature, protection of the body, attraction of mates and identification of species. Contour feathers cover the body of a bird and have a strong, hollow shaft and network of hooks. Down feathers are small and are located under the contour feathers. The purpose of these feathers is to insulate the bird from the cold.

## HARD-SHELLED EGGS

Birds lay hard-shelled eggs. The hard shell keeps an egg from drying out and allows parents to sit on the eggs during incubation. Even though bird eggs are hard-shelled, they have microscopic pores which allow oxygen to pass into and carbon dioxide to exit the shell.

Eggs come in a variety of colors, patterns, shapes and textures. Colors and patterns on eggs vary depending on the need for camouflage. The shape of the egg depends on where the bird nests. Most eggs are oval. Birds that lay their eggs on ledges need eggs with a pointed end so they will not roll off the ledge. The texture of an egg may vary from smooth (hummingbird) to coarse (chicken).

## HOLLOW BONES

Simply having feathers does not permit birds to be creatures of the sky. Extremely lightweight bones are also necessary for flight. Bird bones are strong and hollow with inside supports.

## WARM-BLOODED

Like mammals, birds are warm-blooded. This means their body temperature stays the same no matter how hot or cold it is outside. This characteristic allows birds to maintain high levels of energy needed to fly.

*Birds belong to the class Aves and live everywhere on Earth. There are about 9,000 different Species of birds, divided into Orders and Families.*

# Review

## Classification & Eggs

(lower elementary)

1-6. Circle the things that are true of all birds:



have feathers



lay eggs



have 2 legs



have beaks or bills



have hollow bones



all can fly

7. Circle the bird that lays the smallest egg. Draw a square around the bird that lays the largest egg.



8. All eggs are shaped the same.



Yes



No

9. All eggs are white.



Yes



No

# Review

## Classification & Eggs

(upper elementary)

1-7. Circle all the characteristics that classify birds.

are warm blooded

are cold blooded

have feathers

some have feathers

lay only hard shelled eggs

lay hard shelled or soft shelled eggs

have 2 legs

some have 4 legs

have beaks or bills

most have beaks or bills

have hollow bones

most have hollow bones

all can fly

most can fly

8-9. Which bird lays the smallest egg? Draw an egg about the same size.

sparrow

finch

bee hummingbird

ostrich

10-11. Which bird lays the largest egg? Draw a line showing its size.

kiwi

ostrich

eagle

albatross

12. Which bird lays the largest egg in proportion to its body size?

kiwi

ostrich

owl

albatross

13. What type of bird lays pointy eggs?

birds that lay eggs in burrows  
or tree hollows

birds that lay eggs on ledges

14. What type of bird lays round eggs?  
 birds that lay eggs in burrows or tree hollows                      birds that lay eggs on ledges
15. All birds lay about 4-6 eggs.                      True                      False
16. Birds that lay blue or green eggs lay them on the ground.                      True                      False
17. Birds that lay patterned eggs lay them on the ground.                      True                      False
18. Birds that lay white eggs lay them in burrows or tree hollows.                      True                      False
19. What color are eggs laid on ledges?  
 blue or green                      gray & black spots                      white
20. All eggs have the same texture.                      True                      False